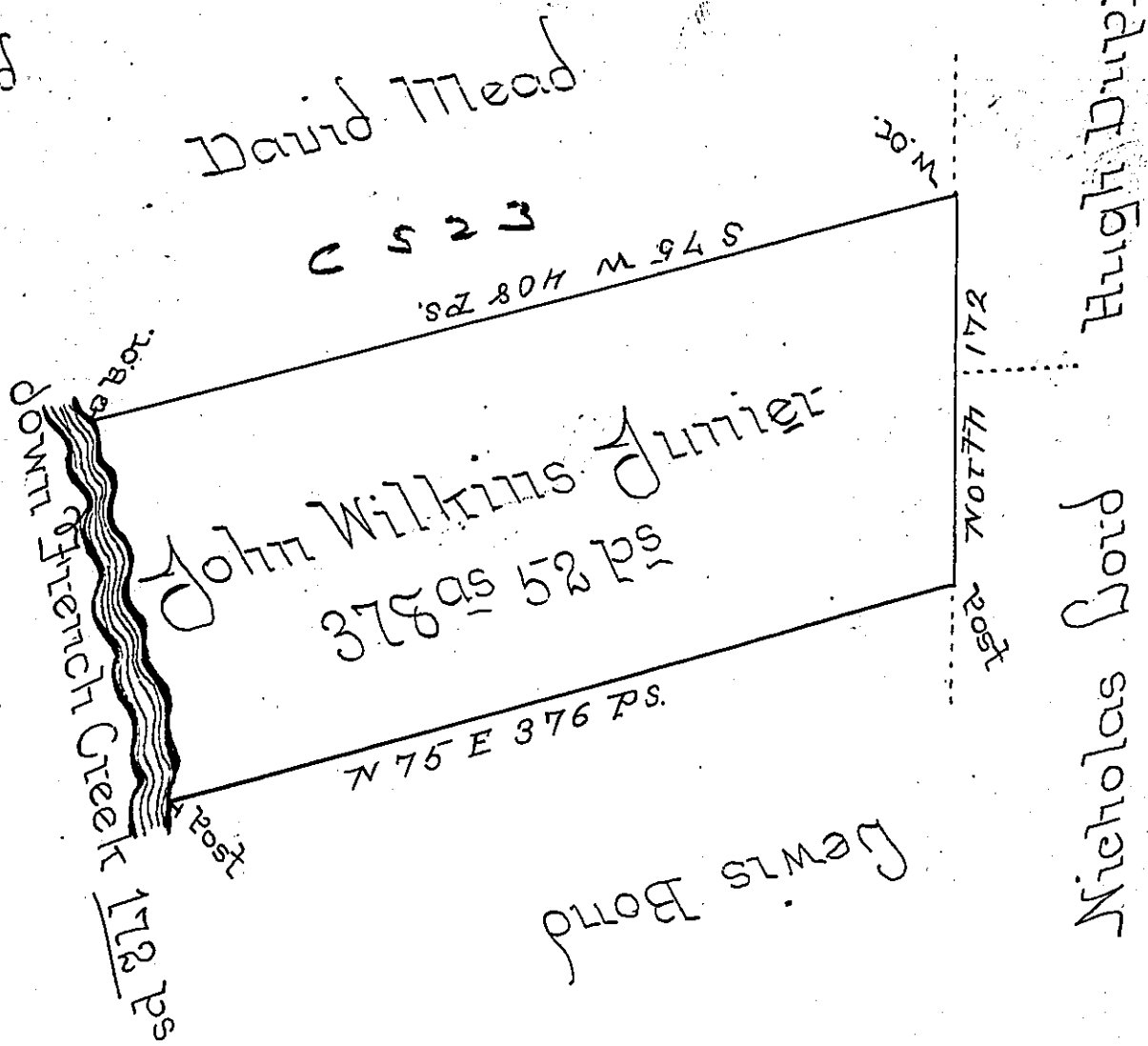


River Courses beg^d. at Bot.

- S 15 & 55 Bot
 - S 10 & 74 Post
 - S 21 & 15 Bottomwood
 - S 24 1/2 & 315 Post
 - S 01 1/2 & 34 Hickory
 - S 8 W 12 Post
- 172.5



Situate on the East Side of French Creek in Allegheny County containing 378 Acres 52 perches & Allowance of Six Percent for Roads &c &c surveyed the 20th day of September 1797 on a Warrant granted John Wilkins Junier bearing date 8th day of June 1796 [It being the same Tract of Land surveyed the 7th day of May 1794 to John Jeffer on his Improv^t dated the 3^d day of April 1792.

John Power & DUSE

To Daniel Brodhead Esq^r }
 Surveyor General }

IN TESTIMONY that the above is a copy of the original remaining on file in the Department of Internal Affairs of Pennsylvania, made conformably to an Act of Assembly approved the 16th day of February, 1833, I have hereunto set my Hand and caused the Seal of said Department to be affixed at Harrisburg, this fourth day of July 1899.



James W. Latta
 Secretary of Internal Affairs.